

Nebraska Farmer

“Union Stockyards, Omaha . . . The World’s No. 1 Livestock Market”

February 4, 1956

Cover and article’s two pages (p. 7 & p. 34)	2
Transcript	5

Courtesy of History Nebraska

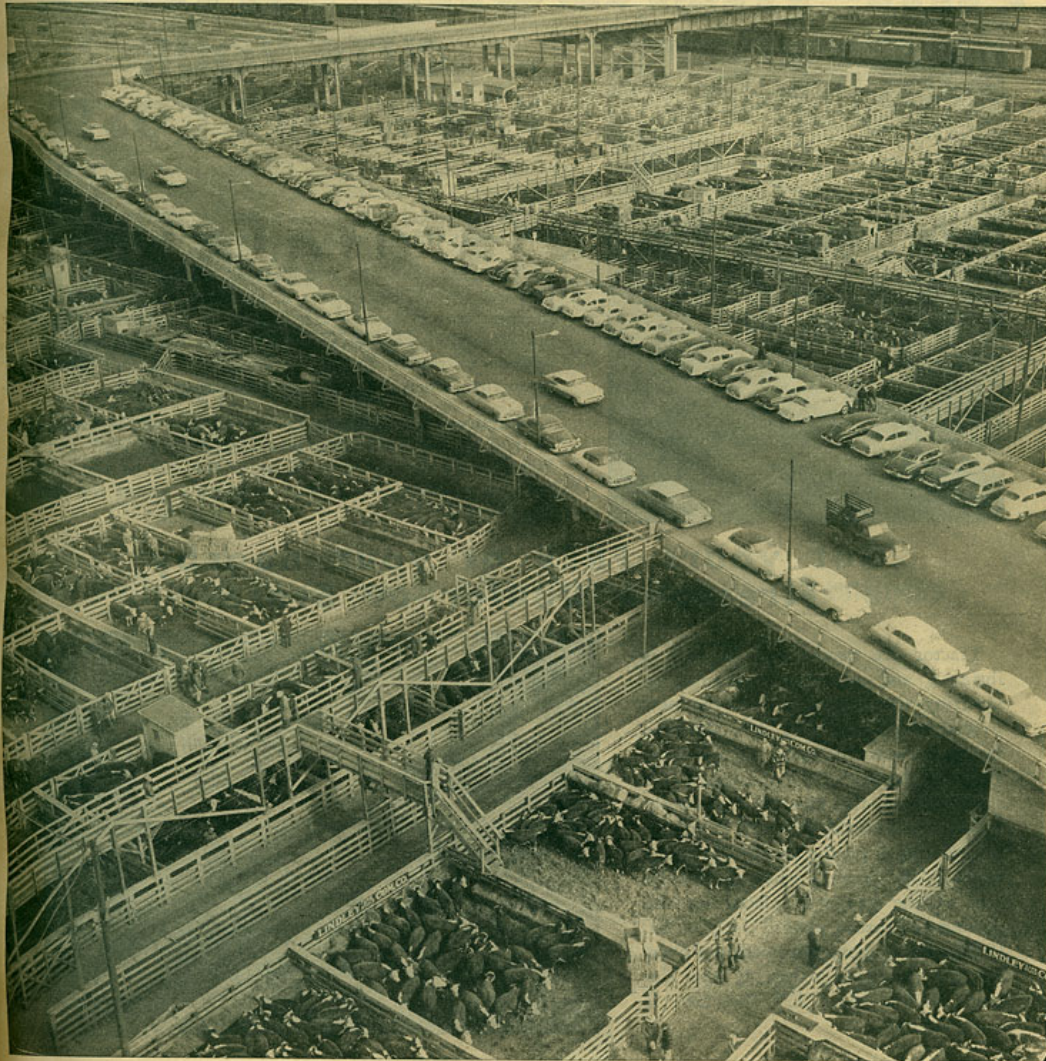
Nebraska Farmer, February 4, 1956
COVER

Nebraska Farmer

February 4, 1956



READ IN NINE OUT OF TEN NEBRASKA FARM HOMES



Union Stockyards, Omaha . . .
The World's No. 1 Livestock Market

Nebraska Farmer, February 4, 1956
FIRST PAGE OF ARTICLE (p. 7)



Omaha had livestock receipts totaling 6,764,140 head in 1955, and thereby became the Nation's No. 1 Livestock Market.

The Nation's No. 1 Stockyards

By HOMER FINE

(Chicago said: *Omaha-Ha-Ha-Ha*, a village of 251,117 souls, is challenging Chicago's right to the title of "Hog Butcher to the World.")

Poor little old Chicago!

The windy giant has been toppled from its perch at the top of the nation's meat market by that husky youngster on the west shore of the Missouri—Omaha.

Poor old Chicago is no longer "Hog Butcher to the World." Nor is the windy city the "Meat Market of the Nation," but merely Second Fiddle to Omaha—World's largest livestock market and meat packing center.

Omaha went over the top in 1955, with total livestock receipts a whopping six per cent above Chicago's total. And that isn't just Omaha's version—those are United States Department of Agriculture figures.

The USDA says Omaha had total livestock receipts in 1955 of 6,764,140 head of cattle, calves, hogs and sheep—388,000 more than that of the nearest competitor, Chicago.

Nearly \$600,000,000 worth of livestock was received at the Omaha stockyards in 1955. That makes an average of over \$2,000,000 for every market day of the year.

The greatest strides toward overtaking Chicago have been during the last 15 years. Official figures show that in 1940 Omaha had only 51% of Chicago's total livestock receipts. But it was 72% in 1944, and climbed to 86% in 1950, 99% in 1954 and went over the top with 106% in 1955.

And that makes Omaha the world's largest livestock market and meat packing center.

Chicago isn't giving up the old titles of "Hog Butcher to the World" and "Meat Market of the Nation" without a struggle. They're still kicking feebly, but Omaha stockyards officials say the windy cityans are trying to change the rules, now that they have dropped to second place.

It's been a long, hard pull to the top

from the beginning of Omaha's public livestock market that opened in August of 1884.

Seven pioneers saw a great need in 1883 for an open competitive public market close to the livestock producing area of the western plains and range country and the feeding area of the cornbelt. They went into action, incorporating as the Union Stock Yards Company and building facilities that have continued to develop until today Omaha has the finest stockyards in the nation.

Those far-sighted pioneers were William Paxton, John McShane,

Peter Iler, John Creighton, Thomas Swobe and Frank Murphy of Omaha and Alexander H. Swan, a Wyoming cattleman and rancher.

The seven pioneers realized that local packinghouses were necessary to a healthy and active livestock market. They knew that there must be a good demand if they were to attract a large supply of livestock.

In the late 1880's, the young stockyards company contributed some \$2,300,000 in land, buildings and capital stock to induce the first five eastern packers to locate in Omaha. While it was necessary to subsidize the first packers, as receipts grew,

more and more packers were attracted to Omaha. At present there are 17 packers in Omaha and two more packing plants are under construction.

These 19 local plants and the 46 commission firms on the Omaha market provide plenty of competition for producers' cattle, calves, hogs and sheep.

Harry B. Coffey, who has been president of the Union Stock Yards Company for the past 12 years, says: The enormous competitive purchasing power that is concentrated on the market by packers, order buyers, and dealers is the best assurance to the shipper of farm market prices. Because of the large volume of business, he adds, the total marketing charges average only about 1 1/2% of the sales price; no other commodity is handled on so small a margin as is livestock on the large central markets.

Maintaining the high standard of integrity in trading practices on the market is the Omaha Live Stock Exchange, a self-regulatory body composed of commission men, order buyers and dealers.

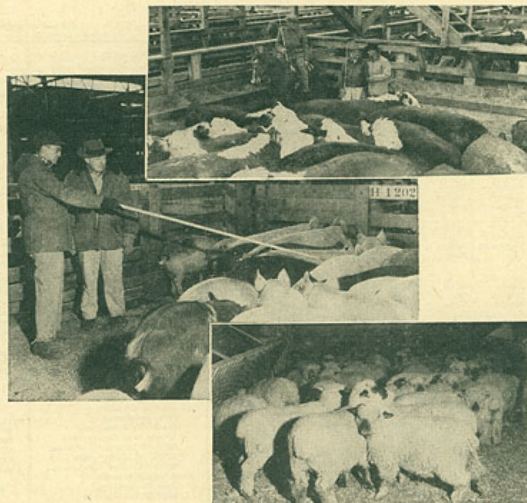
There are many reasons why the husky youngster on the west bank of the Missouri was able to nose poor little old Chicago out as the world's No. 1 Livestock Market. Here are a few of the reasons why Omaha will stay at the top:

Omaha is in the finest feeding area of the United States, with a steady supply of all grades and species of livestock readily available. Thus, it is a natural location for the meat packing industry.

Nearby is the heavy producing area of the western plains and ranges where the finest stocker and feeder livestock in the nation are raised. During 1955, farmers and feeders from 29 states and Canada purchased nearly 700,000 head of stockers and feeders on the Omaha market.

The Omaha market is served by 10

(CONTINUED ON PAGE 34)

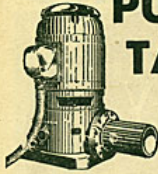


Cattle and calves, hogs and sheep to the tune of nearly \$600,000,000 were received at Omaha's Union Stock Yards last year—an average of over \$2,000,000 for every market day of the year.

Nebraska Farmer, February 4, 1956
 SECOND PAGE OF ARTICLE (p. 34)

WINTROATH

**PUMP
 TALK**



TIPS ON LUBRICATION

Regular oil changes (or grease changes) in pump motors and right angle gear drives are as necessary as oil changes in your automobile crank case. Workmen in our repair shops point out sadly that many of the bearing and gear replacements on all types of pumps are necessary as a result of failure to change oil regularly. These parts are damaged by water which condenses inside the housings due to temperature changes; by acids which form in oil which is subjected to relatively high temperatures and pressures, or by failure of oil which has thickened from long use.

Change Oil or Grease At Least Once A Year

More frequent changes may be necessary where operating conditions are severe. Oil discoloration or indication of an accumulation of water in the oil reservoir should signify need for oil change. Right angle gear drive manufacturers recommend a complete oil change each 2000 hours of operation or once a year—whichever occurs first.

Changing lubricants in motors should be done in accordance with the manufacturer's recommendations. Normally, oil changes involve simply draining the oil and refilling. The old oil carries away most of the accumulation of solid material. Flushing the reservoir with gasoline and solvents is not recommended because the film of oil is removed from the bearings. This causes them to run dry momentarily.

Line Shaft Lubrication

Under normal temperatures and operating conditions SAE 20 acid-free oil is recommended for oil lubricated column.

When low water or air temperatures prevail, lighter weight oil should be used. SAE 30 oil is suggested where the water or air temperatures remain high.

Extended Shutdowns

During extended shutdown it is desirable to run the pump for a few minutes occasionally to restore an oil film to bearings and gears and to change the position of the bearings in the races.

Year After Year Economy

Pump economy means not only lower fuel costs, but also lower maintenance costs. Rugged Wintroath Pumps are built to endure—year after year. Before you select any pump, ask your dealer to explain Wintroath features which will save money for you. Or write for complete information.

Built at Hastings

Wintroath pumps installed in Nebraska are built in Nebraska. Prompt deliveries from large local stocks assure your water without delay.

**WINTROATH
 PUMPS**

DIVISION OF WORTHINGTON CORPORATION

411 W. South St. Phone 27616
 Hastings, Nebraska

General Office: Alhambra, California
 Factories: Alhambra, Hastings, and Hereford, Texas

No. 1 Stockyards

(CONTINUED FROM PAGE 7)

mainline railroads and is at the hub of a network of federal and state highways, making Omaha a natural distribution center.

Through modernization and expansion, the Union Stock Yards provides the nation's best yard facilities and services to shippers. Over half a million dollars annually have been spent on physical improvements over the past 12 years.

Improvements completed in recent months include: 1. An addition to the new parking garage which now accommodates nearly 600 cars in the center of the yards. 2. A dozen additional loading and unloading truck chutes at the west end of the yards. 3. One hundred and twenty-five new packer holding pens for livestock to be trucked out to local packers. 4. Construction of scale houses equipped with latest model scales. 5. New 30-000-bushel grain elevator.

The outlook is bright for Omaha as the world's largest livestock marketing and meat packing center. Two thirds of the nation's livestock is produced west of the Mississippi, and the tendency is to slaughter as near as possible to the source of supply. Poor little old second place Chicago.



Harry B. Coffey, president of Union Stock Yards, keeps an eagle eye on the yards from his office window in the Livestock Exchange Building.



This is Omaha's new sign.



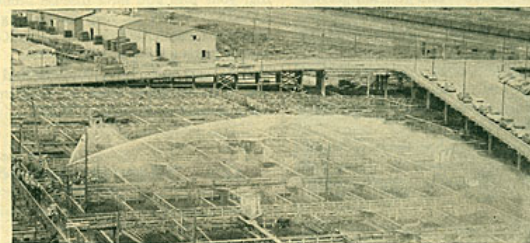
Parking for nearly 600 automobiles has been built right in the middle of the yards. The double-deck parking facilities are across the street in front of the Live Stock Exchange building.



Cattle, calves, sheep and hogs arrive at the Omaha Stock Yards from all directions. These four Wyoming ranchers are looking over part of their cattle in the yards.



K. L. Simpson, secretary of the Union Stock Yards Company, and his staff keep the records and finances in this department.



This fire-quenching stream of water comes from one of 27 nozzles that constitute the fire monitoring system at the Omaha stockyards.



Twelve additional truck loading and unloading chutes have recently been completed at the west end of the yards. The stockyards also has a complete railroad, the South Omaha Terminal Railway.

Nebraska Farmer, February 4, 1956
TRANSCRIPT

(Cover)

Nebraska Farmer February 4, 1956
Read in Nine out of Ten Nebraska Farm Homes
Union Stockyards, Omaha . . .
The World's No. 1 Livestock Market

(p. 7 – the first page of the article)
Omaha, Nebraska

(caption: Omaha had livestock receipts totaling 6,764,140 head in 1955, and thereby became the Nation's No. 1 Livestock Market.)

The Nation's No. 1 Stockyard

By Homer Fine

(Chicago said: *Omaha-Ha-Ha-Ha, a village of 251,117 souls, is challenging Chicago's right to the title of "Hog Butcher to the World."*)

Poor little old Chicago!

The windy giant has been toppled from its perch at the top of the nation's meat market by that husky youngster on the west shore of the Missouri – Omaha.

Poor old Chicago is no longer "Hog Butcher to the World." Nor is the windy city the "Meat Market of the Nation," but merely Second Fiddle to Omaha – World's largest livestock market and meat packing center.

Omaha went over the top in 1955, with total livestock receipts a whopping six per cent above Chicago's total. And that isn't just Omaha's version – those are United States Department of Agriculture figures.

The USDA says Omaha had total livestock receipts in 1955 of 6,764,140 head of cattle, calves, hogs, and sheep – 388,000 more than that of the nearest competitor, Chicago.

Nearly \$600,000,000 worth of livestock was received at the Omaha Stockyards in 1955. That makes an average of over \$2,000,000 for every market day of the year.

The greatest strides toward overtaking Chicago have been during the last 15 years. Official figures show that in 1940 Omaha had only 51% of Chicago's total livestock receipts. But it was 72% in 1944, and climbed to 86% in 1950, 99% in 1954 and went over the top with 106% in 1955.

And that makes Omaha the world's largest livestock market and meat packing center.

Chicago isn't giving up the old titles of "Hog Butcher to the World" and "meat Market of the Nation" without a struggle. They're still kicking feebly, but Omaha stockyards officials say the windy cityans [*sic*] are trying to change the rules, now that they have dropped to second place.

It's been a long, hard putt to the top from the beginning of Omaha's public livestock market that opened in August of 1884.

Seven pioneers saw a great need in 1883 for an open competitive public market close to the livestock producing area of the western plains and range country and the feeding area of the cornbelt. They went into action, incorporating as the Union Stock Yards Company and building facilities that have continued to develop until today Omaha has the finest stockyards in the nation.

Those far-sighted pioneers were William Paxton, John McShane, Peter Iler, John Creighton, Thomas Swobe and Frank Murphy of Omaha and Alexander H. Swan, a Wyoming cattleman and rancher.

The seven pioneers realized that local packinghouses were necessary to a healthy and active livestock market. They knew that there must be a good demand if they were to attract a large supply of livestock.

In the late 1880's, the young stockyards company contributed some \$2,300,000 in land, buildings and capital stock to induce the first five eastern packers to locate in Omaha. While it was necessary to subsidize the first packers, as receipts grew, more and more packers were attracted to Omaha. At present there are 17 packers in Omaha and two more packing plants are under construction.

These 19 local plants and the 46 commission firms on the Omaha market provide plenty of competition for producers' cattle, calves, hogs and sheep.

Harry B. Coffee, who has been president of the Union Stock Yards Company for the past 12 years, says: "The enormous competitive purchasing power that is concentrated on the market by packers, order buyers, and dealers is the best assurance to the shipper of farm market prices. Because of the large volume of business," he adds, "the total marketing charges average only about 1 ½ % of the sales price; no other commodity is handled on so small a margin as is livestock on the large central markets."

Maintaining the high standard of integrity in trading practices on the market is the Omaha Live Stock Exchange, a self-regulatory body composed of commission men, order buyers, and dealers.

There are many reasons why the husky youngster on the west bank of the Missouri was able to nose poor old Chicago out as the world's No. 1 Livestock Market. Here are a few of the reasons why Omaha will stay at the top:

Omaha is in the finest feeding area of the United States, with a steady supply of all grades and species of livestock readily available. Thus, it is a natural location for the meat packing industry.

Nearby is the heavy producing area of the western plains and ranges where the finest stocker and feeder livestock in the nation are raised. During 1955, farmers and feeders from 29 states and Canada purchased nearly 700,000 head of stockers and feeders on the Omaha market.

The Omaha market is served by 10 . . . *(continued on page 34)*

(Caption: Cattle and calves, hogs and sheep to the tune of nearly \$600,000,000 were received at Omaha's Union Stock Yards last year – an average of over \$2,000,000 for every market day of the year.)

(p. 34 – Second page of article)

No. 1 Stockyards
(Continued from Page 7)

. . . mainline railroads and is at the hub of a network of federal and state highways, making Omaha a natural distribution center.

Through modernization and expansion, the Union Stock Yards provides the nation's best yard facilities and services to shippers. Over half a million dollars annually have been spent on physical improvements over the past 12 years.

Improvements completed in recent months include:

1. An addition to the new parking garage which now accommodates nearly 600 cars in the center of the yards.
2. A dozen additional loading and unloading truck chutes at the west end of the yards.
3. One hundred and twenty-five new packer holding pens for livestock to be trucked out to local packers.
4. Construction of scale houses equipped with latest model scales.
5. New 30-000-bushel grain elevator.

The outlook is bright for Omaha as the world's largest livestock marketing and meat packing center. Two thirds of the nation's livestock is produced west of the Mississippi, and the tendency is to slaughter as near as possible to the source of supply. Poor little old second place Chicago.

(Caption 1: Harry B. coffee, president of Union Stock Yards, keeps an eagle eye on the yards from his office window in the Livestock Exchange Building.)

(Caption 2: This is Omaha's new sign. "Omaha World's Largest Livestock Market & Meat Packing Center, Union Stock Yards Company.)

(Caption 3: Parking for nearly 600 automobiles has been built right in the middle of the yards. The double-deck parking facilities are across the street in front of the Live Stock Exchange building.)

(Caption 4: Cattle, calves, sheep and hogs arrive at the Omaha Stock Yards from all directions. These four Wyoming ranchers are looking over part of their cattle in the yards.)

(Caption 5: K. L. Simpson, secretary of the Union stock Yards Company, and his staff keep the records and finances in this department.)

(Caption 6: Twelve additional truck loading and unloading chutes have recently been completed at the west end of the yards. The stockyards also has a complete railroad, the South Omaha Terminal Railway.)

(Caption 7: This fire-quenching stream of water comes from one of 27 nozzles that constitute the fire monitoring system at the Omaha stockyards.)

(Left side of page Ad for Wintroath Pumps)

Pump Talk

Tips on Lubrication

Regular oil changes (or grease changes) in pump motors and right angle gear drives are as necessary as oil changes in your automobile crank case. Workmen in our repair shops point out sadly that many of the bearing and gear replacements on all types of pumps are necessary as a result of failure to change oil regularly. These parts are damaged by water which condenses inside the housings due to temperature changes; by acids which form in oil which is subjected to relatively high temperatures and pressures, or by failure of oil which has thickened from long use.

Change Oil or Grease At Least Once a Year

More frequent changes may be necessary where operating conditions are severe. Oil discoloration or indication of an accumulation of water in the oil reservoir should signify need for oil change. Right angle gear drive manufacturers recommend a complete oil change each 2000 hours of operation or once a year – whichever occurs first.

Changing lubricants in motors should be done in accordance with the manufacturer's recommendations. Normally, oil changes involve simply draining the oil and refilling. The old oil carries away most of the accumulation of solid material. Flushing the reservoir with gasoline and solvents is not recommended because the film of oil is removed from the bearings. This causes them to run dry momentarily.

Line Shaft Lubrication

Under normal temperatures and operating conditions SAE 20 acid-free oil is recommended for oil lubricated column.

When low water or air temperatures prevail, lighter weight oil should be used. SAE 30 oil is suggested where the water or air temperatures remain high.

Extended Shutdowns

During extended shutdown it is desirable to run the pump for a few minutes occasionally to restore an oil film to bearings and gears and to change the position to the bearings in the races.

Year after Year Economy

Pump economy means not only lower fuel costs, but also lower maintenance costs. Rugged Winroath Pumps are built to endure – year after year. Before you select any pump, ask your dealer to explain Wintroath features which will save money for you. Or write for complete information.

Built at Hastings

Wintroath pumps installed in Nebraska are built in Nebraska. Prompt deliveries from large local stocks assure your water without delay.

Wintroath Pumps
Division of Worthington Corporation
411 W. South St. Phone 27616
Hastings, Nebraska

General office: Alhombra, California
Factories: Alhombra, Hastings, and Hereford, Texas