



SAVING YOUR Treasures

A Website about what you can do to protect and preserve the things of importance in your life

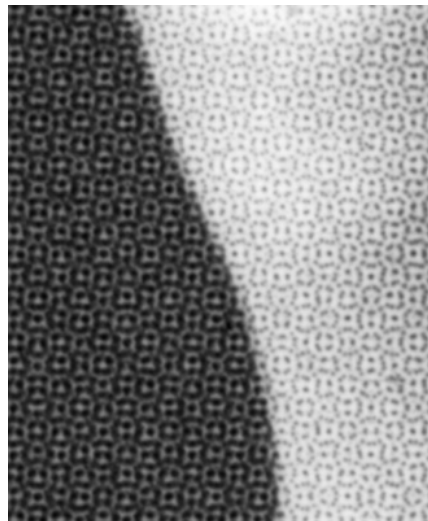


Gerald R. Ford Conservation Center
Nebraska State Historical Society
1326 S. 32nd Street, Omaha, NE 68105 (402) 595-1180, Fax: (402) 595-1178
treasures@nebraskahistory.org
www.nebraskahistory.org

Mechanical Reproduction or Artist's Original Work?

Many people are not sure whether they have an original drawing or artist's print or a commercial mechanical reproduction. A simple way to find out is to examine the picture with a magnifying glass. If you can see a regular grid of small dots or squares, then your picture is a mechanical print or lithographic reproduction, not an artist's original work. If you are not sure what a mechanical reproduction looks like, examine any picture in a magazine or newspaper and compare it for the same pattern of dots or squares. The image below is from a photomechanical reproduction image from the following website:

http://www.ranum.com/fun/lens_work/papers/filmkicksass/closeup.jpg



<http://www.moma.org/exhibitions/2001/whatisaprint/flash.html>

Recommendations in this website/pdf/video are provided as a public service for guidance only. Neither inclusion nor exclusion of products or providers constitutes endorsement or lack thereof. The Gerald R. Ford Conservation Center does not assume responsibility or liability, expressed or implied, for any resulting activities involving any collections or objects.